

ACCESSORIES

FEATURES

• Tovey Engineering manufactures precision thread adaptors, fixtures, cables and connectors. They're designed specifically for use with load cell applications. Design considerations incorporate the appropriate material, heat treat, and exact tolerances required for applied load and to maintain proper alignment. Standard configurations shown- Consult factory for alternate thread sizes and custom applications.

CALIBRATION ADAPTERS

PART NUMBER	MALE THREAD SIZE	JAM NUT	DIMENSIONS				
			D	L1	L2	L3	R
TAMM-100	1/2-20	JN-100	1.28	.75	1.50	2.75	4
TAMM-101	5/8-18	JN-101	1.28	.75	1.57	2.82	4
TAMM-102	1-14	JN-102	2.00	1.50	2.15	4.15	6
TAMM-103	1 1/4-12	JN-103	2.00	1.50	2.32	4.32	6
TAMM-104	1 3/4-12	JN-104	2.75	1.75	3.26	5.52	6
TAMM-105	2 3/4-8	JN-105	3.50	2.50	5.03	8.28	12
TAMM-106	4-8	JN-106	7.00	3.50	7.25	12.25	20
TAMM-120	6-8	JN-120	9.50	4.70	10.44	16.64	20

THREAD ADAPTERS

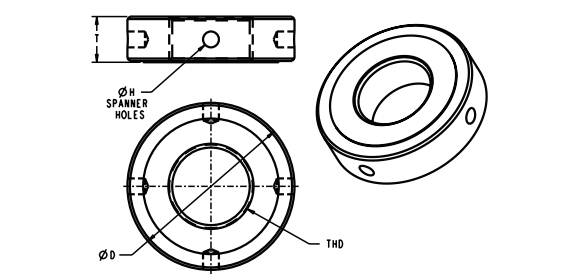
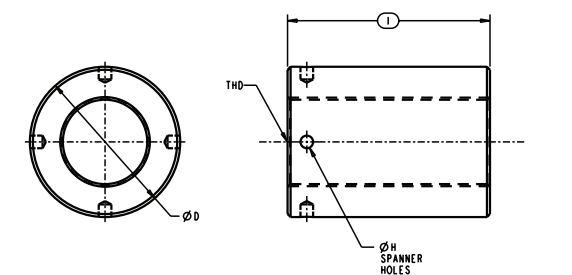
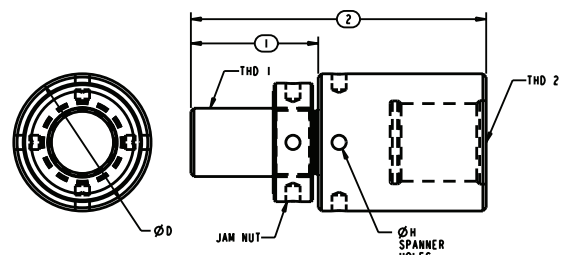
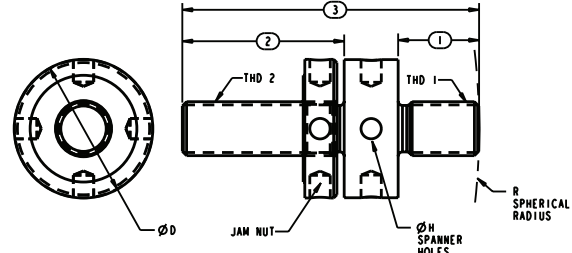
PART NUMBER	THREAD SIZE		JAM NUT	DIMENSIONS		
	MALE	FEMALE		D	1	2
TAMF-100	1/2-20	1/2-20	JN-100	1.29	1.50	2.94
TAMF-101	5/8-18	5/8-18	JN-101	1.24	1.57	3.07
TAMF-102	1-14	1-14	JN-102	2.00	2.15	4.65
TAMF-103	1 1/4-12	1 1/4-12	JN-103	1.97	2.32	4.82
TAMF-104	1 3/4-12	1 3/4-12	JN-104	3.17	3.30	6.80
TAMF-105	2 3/4-8	2 3/4-8	JN-105	3.95	5.03	9.03

COUPLERS

PART NUMBER	FEMALE THREAD SIZE	DIMENSIONS		
		D	1	H
TAFF-099	1/4-28	.47	1.00	.42 flat
TAFF-100	1/2-20	1.22	2.00	3/16
TAFF-101	5/8-18	1.36	2.00	3/16
TAFF-102	1-14	1.97	3.25	1/4
TAFF-103	1 1/4-12	2.22	3.25	1/4
TAFF-104	1 3/4-12	3.00	4.00	1/4
TAFF-105	2 3/4-8	5.00	5.50	3/8
TAFF-107	1 1/2-12	3.00	4.00	1/4

JAM NUTS

PART NUMBER	THREAD SIZE	DIMENSIONS		
		D	T	H
JN-100	1/2-20	1.29	.31	3/16
JN-101	5/8-18	1.29	.38	3/16
JN-102	1-14	2.00	.55	3/16
JN-103	1 1/4-12	2.16	.72	1/4
JN-104	1 3/4-12	3.17	.97	1/4
JN-105	2 3/4-8	4.75	1.58	3/8
JN-106	4-8	7.00	2.188	3/8
JN-120	6-8	9.50	4.75	1/2-13



LOAD BUTTONS

PART NUMBER	THREAD SIZE	FIGURE	DIMENSIONS			
			H/D	1	2	R
LB-099	1/4-28	1	0.44	0.63	0.15	2
LB-100	1/2-20	1	0.75	1.05	0.30	4
LB-101	5/8-18	1	0.94	1.41	0.41	4
LB-102	1-14	1	1.50	2.1	0.61	4
LB-103	1 1/4-12	2	2.25	2.38	0.88	6
LB-104	1 3/4-12	2	3.75	3.34	1.34	6
LB-105	2 3/4-8	2	4.00	3.40	1.40	12
LB-106	4-8	2	7.89	4.39	2.89	20
LB-107	1 1/2-12	2	3.95	3.50	1.50	6

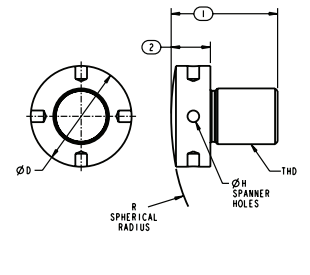
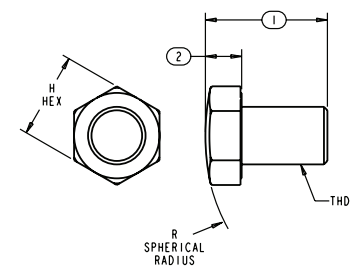


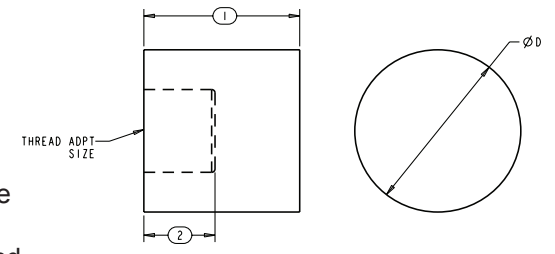
Figure 1

Figure 2

COMPRESSION PLATE

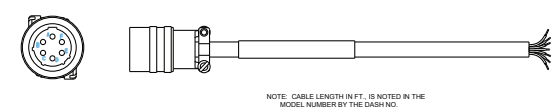
PART NUMBER	THREAD SIZE	DIMENSIONS		
		D	L1	L2
CP-100	1/2-20	1.47	1.38	.63
CP-101	5/8-18	1.47	1.38	.63
CP-102	1-14	2.00	2.00	.63
CP-103	1 1/4-12	2.00	2.00	.63
CP-104	1 3/4-12	2.50	2.25	.75
CP-105	2 3/4-8	4.00	2.50	.75
CP-106	4-8	6.00	3.75	.75

• Used for compression loading, Compression Plates are used in conjunction with installed TAMM Calibration Adapters. Contacting the spherical end on the adapter, the CP is a hardened interface that is free to swivel on the TAMM, spreading the load, and allowing for compensation of non-parallel loading surfaces.



INSTRUMENT CABLES

PART NUMBER	DISCRIPTION
CBL-101-10	Interconnect Cable, 7 wire to 4 pins, MS3116F-10-6S to pigtail, 10'
CBL-102-10	Interconnect Cable, 7 wire to 6 pins, MS3116F-10-6S to pigtail, 10'
CBL-108-10	Interconnect Cable, 7 wire, MS3116F-10-6S to 9150 instrument, mating connector, 6-4 adaption made on MS3116 connector, 10'
CBL-120-10	Interconnect Cable, 7 wire, MS3116F-10-6S to 9150 instrument, mating connector, 10'
CBL-123-10	Serial Cable, 9150 instrument (DB-15) to computer (DB-9), 10'
CBL-135-10	Interconnect Cable, 7 wire to 6 pins, MS3116F-10-6S to 7230 Instrument



MATING CONNECTORS

PART NUMBER	DISCRIPTION
MC-100	MS3116F-10-4S (PT06A-10-6S)-SR, mating connector
MC-200	MS3112E-10-6P (PT02E-10-6P), load cell connector
MC-201	Bendix PC04E-10-6P, load cell connector
MC-101	Bendix PC06W-10-6S, mating connector

