

# 5000 SERIES HIGH CAPACITY UNIVERSAL FORCE TRANSDUCER

## FEATURES

- Universal Tension and Compression
- .2% Accuracy
- Capacities to 1 Million lbf.
- 5pt Tension & Compression Calibration
- Proprietary Modulus Compensated Strain Gages
- Metric Capacities Available - Contact Factory



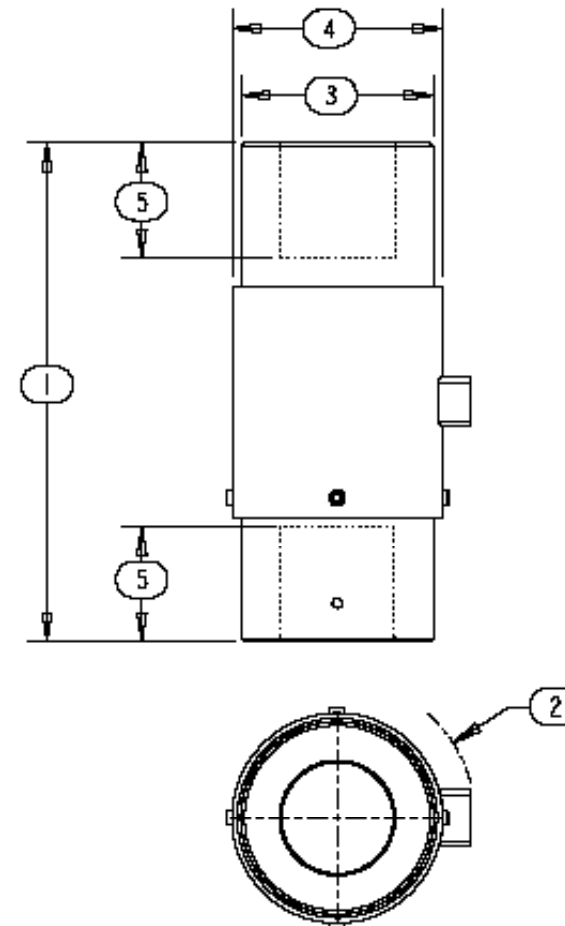
## SPECIFICATIONS

Model	5030	5040	5060	5080
Capacity U.S. lbf.	100K, 135K	250K, 300K	500K, 600K	1000K
<b>PARAMETERS</b>				
<b>ACCURACY</b>				
Static Error Band, % Rated Output	+/-0.200	+/-0.200	+/-0.200	+/-0.200
Nonlinearity, % Rated Output	+/-0.200	+/-0.200	+/-0.200	+/-0.200
Hysteresis, % Rated Output	+/-0.200	+/-0.200	+/-0.200	+/-0.200
Nonrepeatability, % Rated Output	+/-0.010	+/-0.010	+/-0.010	+/-0.010
Creep, % in 20 minutes	+/-0.025	+/-0.025	+/-0.025	+/-0.025
Zero Balance, % Rated Output	+/-1.0	+/-1.0	+/-1.0	+/-1.0
<b>TEMPERATURE</b>				
Range, Compensated, °F	+15 to +115	+15 to +115	+15 to +115	+15 to +115
Range, Compensated, °C	-10 to +45	-10 to +45	-10 to +45	-10 to +45
Range, Operating, °F	-30 to +200	-30 to +200	-30 to +200	-30 to +200
Range, Operating, °C	-35 to +90	-35 to +90	-35 to +90	-35 to +90
Effect on Sensitivity, % Rdg/ °F	+/-0.003	+/-0.003	+/-0.003	+/-0.003
Effect on Sensitivity, % Rdg/ °C	+/-0.006	+/-0.006	+/-0.006	+/-0.006
Effect on Zero, % Rated Output/ ° F	+/-0.003	+/-0.003	+/-0.003	+/-0.003
Effect on Zero, % Rated Output/ ° C	+/-0.006	+/-0.006	+/-0.006	+/-0.006
<b>ELECTRICAL</b>				
Rated Output, mV/V, Nominal	2	2	2	2
Excitation Voltage, VDC Maximum	15	15	15	15
Input Resistance, Ohms	350	350	350	350
Output Resistance, Ohms	350	350	350	350
Insulation Resistance, Megohm	5000	5000	5000	5000
Bayonet Connector	PT02E-10-6P (MS3112E-10-6P)			
<b>MECHANICAL</b>				
Safe Overload Range, % Rated Capacity	+/-150	+/-150	+/-150	+/-150
Weight lb	19	52	146, 153	329
Flexure Material	Steel			

# 5000 SERIES HIGH CAPACITY UNIVERSAL FORCE TRANSDUCER

## DIMENSIONS

Model	5030	5040	5060	5080
Capacity	100K, 135K lbf	250K, 300K lbf	500K, 600K lbf	1000K lbf
Dimensions	inch	inch	inch	inch
1.	10.00	15.30	23.00	27.50
2.	R 2.56	R 3.53	R 4.27	R 6.27
3.	3.50	5.00	6.50	9.00
4.	3.85	5.50	7.00	9.50
5.	2-12 2.00 Deep	3-12 3.00 Deep	4-8 4.50 Deep	6-8 6.00 Deep



## OPTIONS

- Additional bridges
- Output adjustment to standard
- Compression overload protection
- Integral cable
- Custom connectors
- Connector Protectors

## ACCESSORIES

- Mating connector
- Loading fixtures
- Interconnect cable
- Shunt calibration resistor
- Instrumentation