

# 5100 SERIES HIGH CAPACITY COMPRESSION COLUMN FORCE TRANSDUCERS

## FEATURES

- Compact Design
- .15% Accuracy
- Special Capacities to 2 Million lbf.
- 5pt Compression Calibration
- Proprietary Modulus Compensated Strain Gages
- Metric Capacities Available - Consult Factory



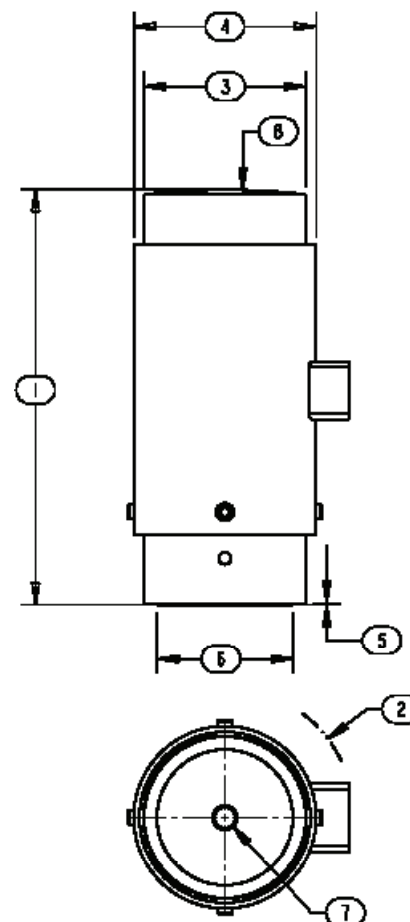
## SPECIFICATIONS

Model	5130	5135	5140	5160	5180
Capacity U.S. lbf.	100K	200K	300, 400K	500K, 600K	750K, 1000K
<b>PARAMETERS</b>					
<b>ACCURACY</b>					
Static Error Band, % Rated Output	+/-0.150	+/-0.150	+/-0.150	+/-0.150	+/-0.150
Nonlinearity, % Rated Output	+/-0.150	+/-0.150	+/-0.150	+/-0.150	+/-0.150
Hysteresis, % Rated Output	+/-0.150	+/-0.150	+/-0.150	+/-0.150	+/-0.150
Nonrepeatability, % Rated Output	+/-0.010	+/-0.010	+/-0.010	+/-0.010	+/-0.010
Creep, % in 20 minutes	+/-0.025	+/-0.025	+/-0.025	+/-0.025	+/-0.025
Zero Balance, % Rated Output	+/-1.0	+/-1.0	+/-1.0	+/-1.0	+/-1.0
<b>TEMPERATURE</b>					
Range, Compensated, °F	+15 to +115	+15 to +115	+15 to +115	+15 to +115	+15 to +115
Range, Compensated, °C	-10 to +45	-10 to +45	-10 to +45	-10 to +45	-10 to +45
Range, Operating, °F	-30 to +200	-30 to +200	-30 to +200	-30 to +200	-30 to +200
Range, Operating, °C	-34 to +90	-34 to +90	-34 to +90	-34 to +90	-34 to +90
Effect on Sensitivity, % Rdg/ °F	+/-0.003	+/-0.003	+/-0.003	+/-0.003	+/-0.003
Effect on Sensitivity, % Rdg/ °C	+/-0.006	+/-0.006	+/-0.006	+/-0.006	+/-0.006
Effect on Zero, % Rated Output/ ° F	+/-0.003	+/-0.003	+/-0.003	+/-0.003	+/-0.003
Effect on Zero, % Rated Output/ ° C	+/-0.006	+/-0.006	+/-0.006	+/-0.006	+/-0.006
<b>ELECTRICAL</b>					
Rated Output, mV/V, Nominal	2	2	2	2	2
Excitation Voltage, VDC Maximum	15	15	15	15	15
Input Resistance, Ohms	350	350	350	350	350
Output Resistance, Ohms	350	350	350	350	350
Insulation Resistance, Megohm	5000	5000	5000	5000	5000
Bayonet Connector	PT02E-10-6P (MS3112E-10-6P)				
<b>MECHANICAL</b>					
Safe Overload Range, % Rated Capacity	150	150	150	150	150
Weight lb	5	13	25	45, 46	96
Flexure Material	Steel	Steel	Steel	Steel	Steel

# 5100 SERIES HIGH CAPACITY COMPRESSION COLUMN FORCE TRANSDUCERS

## DIMENSIONS

Model	5130	5135	5140	5160	5180
Capacity	100K lbf	200K lbf	300K, 400K lbf	500K, 600K lbf	750K, 1000K lbf
Dimensions	inch	inch	inch	inch	inch
1.	5.00	7.00	9.00	10.00	12.00
2.	R 1.99, 2.26	R 2.33	R 2.78- 300K R 3.00- 400K	R 3.29	R 4.02
3.	2.00	3.00	3.50-300K 3.70-400K	4.50	6.00
4.	2.38	3.25	3.95	5.00	6.50
5.	.03	.03	.03	.03	.03
6.	1.68	2.37	2.94-300K 3.50-400K	3.89	5.02
7.	3/8 - 24 .50 Deep	1/2 - 20 .50 Deep	1/2 - 20 .75 Deep.	1 - 14 .75 Deep	1 - 14 1.00 Deep
8.	R 12	R 12	R 15-300K R 16-400K	R 20	R 20



## OPTIONS

- Additional bridges
- Output adjustment to standard
- Compression overload protection
- Integral cable
- Custom connectors
- Connector Protectors

## ACCESSORIES

- Mating connector
- Loading fixtures
- Interconnect cable
- Shunt calibration resistor
- Instrumentation