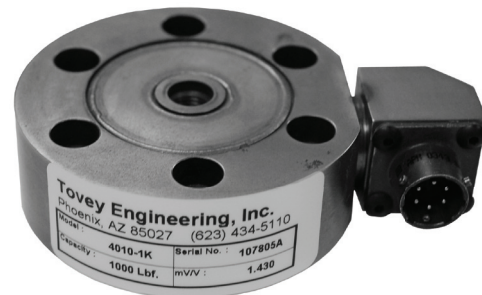


MODEL 4110 STAINLESS STEEL FORCE TRANSDUCERS

FEATURES

- Stainless Steel Construction
- Compact Size
- Welded Diaphragm
- 5pt Tension & Compression Calibration
- Optional Hermetically Sealed Connector
- Optional Base
- Counterbored Mounting Holes
- Proprietary Modulus Compensated Strain Gages

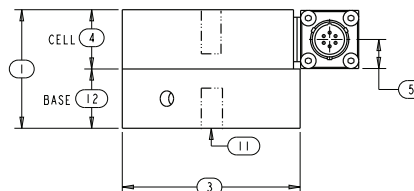
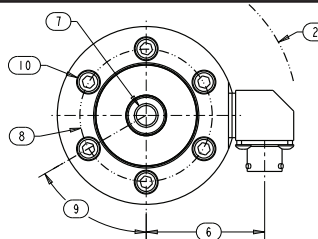


SPECIFICATIONS

Model	4110	4115
Capacity U.S. lbf.	500, 1K	2K, 5K
PARAMETERS		
ACCURACY		
Static Error Band, % Rated Output	+/-0.100	+/-0.100
Nonlinearity, % Rated Output	+/-0.100	+/-0.100
Hysteresis, % Rated Output	+/-0.100	+/-0.100
Nonrepeatability, % Rated Output	+/-0.020	+/-0.020
Creep, % in 20 minutes	+/-0.050	+/-0.050
Zero Balance, % Rated Output	+/-2.0	+/-2.0
TEMPERATURE		
Range, Compensated, °F	+15 to +115	+15 to +115
Range, Compensated, °C	-10 to +45	-10 to +45
Range, Operating, °F	-65 to +200	-65 to +200
Range, Operating, °C	-55 to +90	-55 to +90
Effect on Sensitivity, % Rdg/ °F	+/-0.0020	+/-0.0020
Effect on Sensitivity, % Rdg/ °C	+/-0.0036	+/-0.0036
Effect on Zero, % Rated Output/ ° F	+/-0.0020	+/-0.0020
Effect on Zero, % Rated Output/ ° C	+/-0.0036	+/-0.0036
ELECTRICAL		
Rated Output, mV/V, Nominal	3	3
Excitation Voltage, VDC Recommended/Max	10/15	10/15
Input Resistance, Ohms	350	350
Output Resistance, Ohms	350	350
Insulation Resistance, Megohm	5000	5000
Connector	PT02E-10-6P (MS3112E-10-6P)	
MECHANICAL		
Safe Overload Range, % Rated Capacity	+/-150	+/-150
Weight lb	1.5	2.0
Weight kg	.5	1
Flexure Material	Stainless Steel	

DIMENSIONS

Model	4110	4115
Capacity	500, 1K	2K, 5K
Dimensions	inch	inch
1.	2.00	2.00
2.	R 2.53	R 2.78
3.	3.00	3.50
4.	1.00	1.00
5.	.50	.50
6.	2.00	2.25
7.	3/8 -24 UNF 3B THRU	1/2 -20 UNF 3B THRU
8.	2.25	2.63
9.	60°	60°
10.	C'Bore for 1/4-28 SHCS 6 Places	C'Bore for 5/16-24 SHCS 6 Places
11.	3/8-24 UNF 3B .70 Deep	1/2-20 UNF 3B .70 Deep
12.	1.00	1.00



OPTIONS

Additional bridges
Output adjustment to standard
Compression overload protection
Integral cable
Connector Protectors
Custom connectors

ACCESSORIES

Mating connector
Loading fixtures
Interconnect cable
Shunt calibration resistor
Instrumentation