

# MODEL 4120 STAINLESS STEEL FORCE TRANSDUCERS

## FEATURES

- Stainless Steel Construction
- Welded Diaphragm
- 5pt Tension & Compression Calibration
- Optional Hermetically Sealed Connector
- Optional Base
- Counterbored Mounting Holes on 10K Model
- Proprietary Modulus Compensated Strain Gages



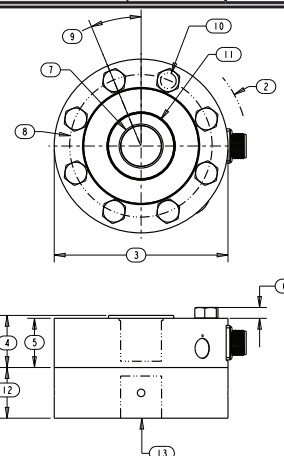
## SPECIFICATIONS

Model	4120	4125
Capacity U.S. lbf.	10K	20K
<b>PARAMETERS</b>		
<b>ACCURACY</b>		
Static Error Band, % Rated Output	+/-0.100	+/-0.100
Nonlinearity, % Rated Output	+/-0.100	+/-0.100
Hysteresis, % Rated Output	+/-0.080	+/-0.080
Nonrepeatability, % Rated Output	+/-0.020	+/-0.020
Creep, % in 20 minutes	+/-0.030	+/-0.030
Zero Balance, % Rated Output	+/-2.0	+/-2.0
<b>TEMPERATURE</b>		
Range, Compensated, °F	+15 to +115	+15 to +115
Range, Compensated, °C	-10 to +45	-10 to +45
Range, Operating, °F	-65 to +200	-65 to +200
Range, Operating, °C	-55 to +90	-55 to +90
Effect on Sensitivity, % Rdg/ °F	+/-0.0008	+/-0.0008
Effect on Sensitivity, % Rdg/ °C	+/-0.0015	+/-0.0015
Effect on Zero, % Rated Output/ ° F	+/-0.0015	+/-0.0015
Effect on Zero, % Rated Output/ ° C	+/-0.0027	+/-0.0027
<b>ELECTRICAL</b>		
Rated Output, mV/V, Nominal	3	3
Excitation Voltage, VDC Recommended/Max	10/20	10/20
Input Resistance, Ohms	350	350
Output Resistance, Ohms	350	350
Insulation Resistance, Megohm	5000	5000
Bayonet Connector	MS3102E14S-6	
<b>MECHANICAL</b>		
Safe Overload Range, % Rated Capacity	+/-150	+/-150
Weight lb	6	9
Weight kg	3	4
Flexure Material	Stainless Steel	

## DIMENSIONS

Model	4120	4125
Capacity	10K	20K
<b>Dimensions</b>		
1.	inch	inch
2.	3.55	3.55
3.	3.39	3.62
4.	5.50	6.00
5.	1.80	1.80
6.	1.70	1.70
7.	N/A	.38
8.	1 -14 UNS 3B	1 1/2 -12 UNF 3B
9.	4.50	4.88
10.	22.5°	22.5°
11.	C Bore for 3/8-24 8 Places	.53 8 Places
12.	1.73	2.25
13.	1.75	1.75
	1 -14 1.65 Deep	1 1/2 -12 1.65 Deep

Note: 20K drawing shown. 10K package has counterbored mounting holes.



## OPTIONS

Hermetically sealed connector  
Custom Connectors  
Base  
Output Adjusted to Standard

## ACCESSORIES

Mating connector  
Loading fixtures  
Interconnect cable  
Shunt calibration resistor  
Instrumentation